



**OUTBACK
MOTORTEK**

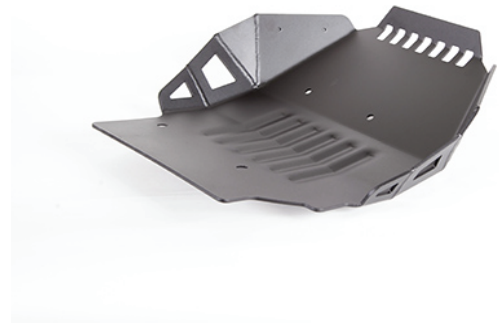
Installation Instructions >> Short Skid Plate >> Africa Twin 1000

Thank you for trusting Outback Motortek with your purchase of our product. Hope you will find pride in installing and showing off the item you are just about to open. Outback Motortek products are designed and tested in Ontario, Canada and engineered and manufactured in the European Union, Hungary. It's a family business on either side of the Atlantic Ocean. More info about us at www.OutbackMotortek.com

“Till the wheels fall off”

Lorry Gombos
Founder and owner
Outback Motortek

See attached pages for product kit, recommended tools and recommended torque specs.



1.

Installation Instructions >> Short Skid Plate >> Africa Twin 1000

1. After removing the factory skid plate, proceed with removing the bolt in the middle of the skid plate mount using a 12mm socket and ratchet.

Ratchet extension is optional.

2. Take the supplied skid plate mount cross brace and place it on the frame underneath the engine.



2.

OUTBACK MOTORCYCLE

3. Line it up with the mounting hole in the center or the factory skid plate mount. Re-insert the factory bolt by hand-threading it.
Tip: leave this bracket loose, it will help you lining up the mounting holes.



4. Remove the factory metal clips and spacers.



3.

OUTBACK MOTORCYCLE

5. Mount the supplied rubber insert inside the factory rubber isolators. Both sides.



6. Secure both rubber inserts using the supplied clips.



4.

Installation Instructions >> Short Skid Plate >> Africa Twin 1000

7. Mount the skid plate and line up the front mounting holes. Insert and first hand-thread the M8x16mm Allen bolts+washers. Do not tighten it, yet.
Note: thread-locking liquid is recommended.



8. Insert and hand-thread the M8x12 mm Allen bolts after lining up the rear mounting holes.
Note: thread-locking liquid is recommended.



5.

7. Finally, go ahead and tighten all the bolts and nuts to the required torque specs and make sure to check again after going out for a test ride.

Congratulations! You've completed installing your Outback Motortek product.



Should you have any question regarding the installation, please contact us at info@outbackmotortek.com

or call toll free at 1 877 931 3636

Important note! Outback Motortek recommends its customer to install their products by a certified, experienced motorcycle mechanic. Outback Motortek assumes no liability for any accident, injury, death, loss, or other claim related to or resulting from the use of its products. In no event shall Outback Motortek be liable for incidental or consequential damages relating to or resulting from the use of its product or any of its parts.

6.

Honda Africa Twin 1000 Skid Plate - Hardware List and Recommended Tools

1. Ratchet
2. 5mm Allen Key or socket
3. Clips
4. Rubber inserts
5. M8x45mm Allen bolts+washers
6. M8x16mm+washers
7. M8x12mm Allen bolts (for the countersunk holes)

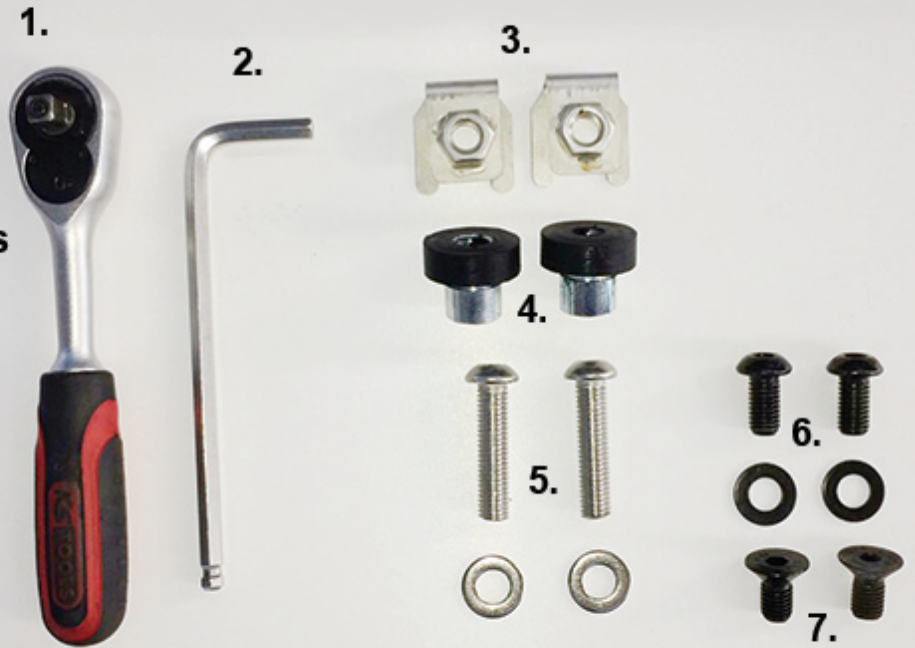


Table a. General bolt tightening torques in Nm (max. permissible)

Bolt diameter	Bolt Class (according to DIN 267)					
	5.6	5.8	6.8	8.8	10.9	12.9
M5	2.5	3.5	4.5	6	8	10
M6	4.5	6	7.5	10	14	17
M8	11	15	18	24	34	40
M10	23	30	36	47	66	79
M12	39	52	62	82	115	140
M14	62	82	98	130	180	220
M16	94	126	150	200	280	340
M18	130	174	210	280	390	470